

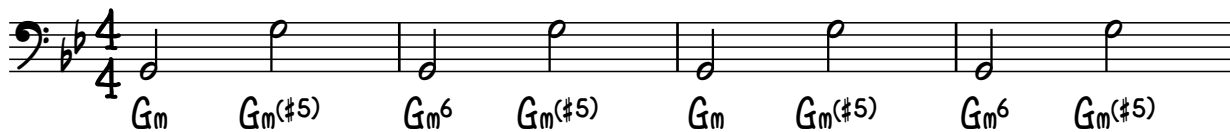
CONTRA BASS

Autumn Romance

GUNHILD CARLING
MARCH 5TH -13

♩ = 130

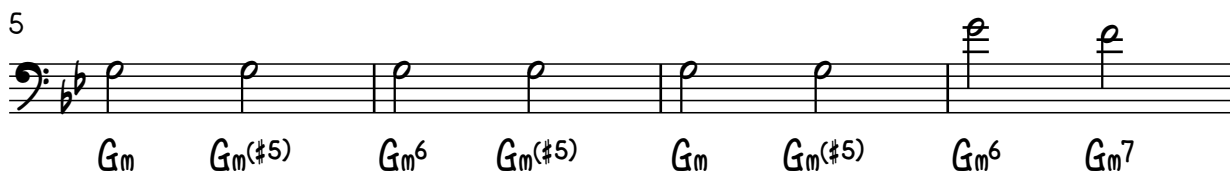
4/4



Gm Gm(#5) Gm6 Gm(#5) Gm Gm(#5) Gm6 Gm(#5)

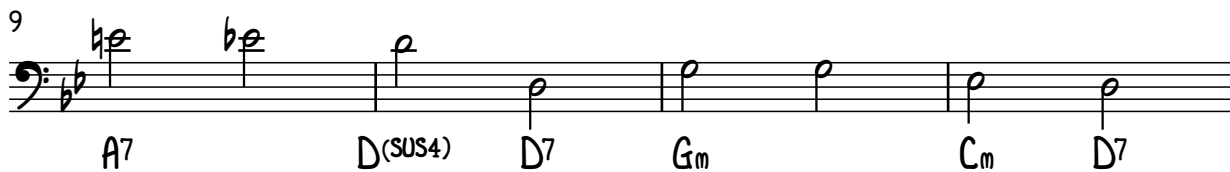
(A)

5



Gm Gm(#5) Gm6 Gm(#5) Gm Gm(#5) Gm6 Gm7

9



A7 D(SUS4) D7 Gm Cm D7

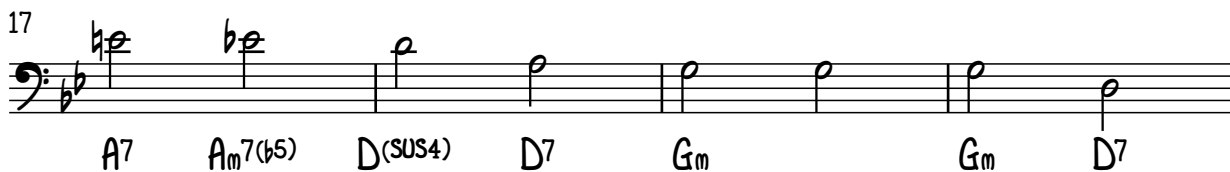
(B)

13



Gm Gm(#5) Gm6 Gm(#5) Gm Gm(#5) Gm6 Gm7

17



A7 Am7(b5) D(SUS4) D7 Gm Gm D7

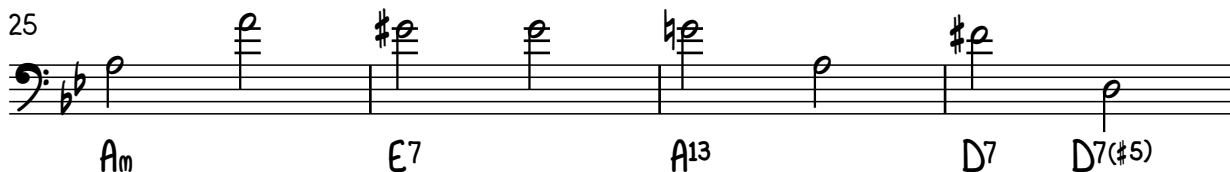
(C)

21



G Gmaj7 G6 G C#m7 C7(b5) Bm7 E7

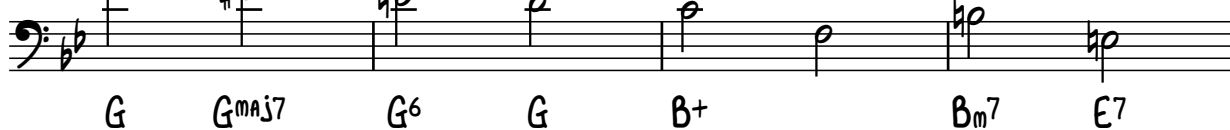
25



Am E7 A13 D7 D7(#5)

(D)

29

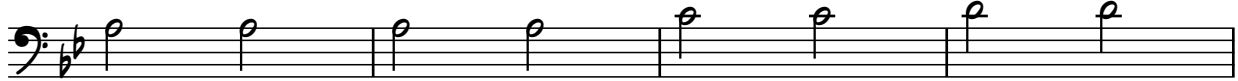


G Gmaj7 G6 G B+ Bm7 E7

CONTRA BASS

2

33



(E)

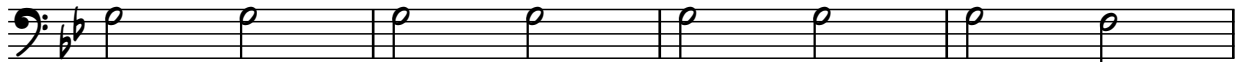
A7

A7

Cm⁶

D7

37



Gm

Gm(#5)

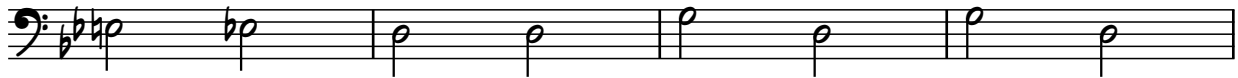
Gm⁶

Gm(#5)

Gm

Gm⁷

41



A7

Am7(b5)

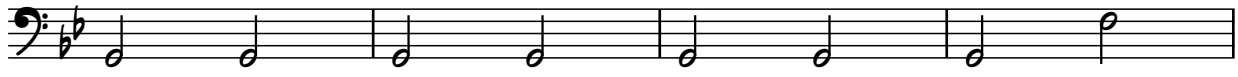
D(SUS4)

D7

Gm

(F)

45



Gm

Gm(#5)

Gm⁶

Gm(#5)

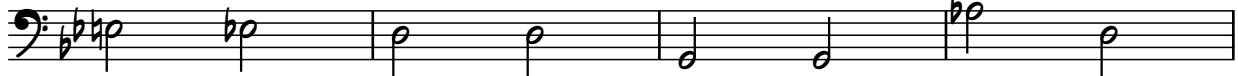
Gm

Gm(#5)

Gm⁶

Gm⁷

49



A7

D(SUS4)

D7

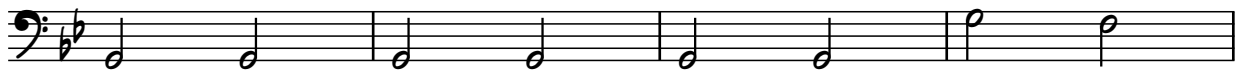
Gm

Ab(#11)

D+11

53

(G)



Gm

Gm(#5)

Gm⁶

Gm(#5)

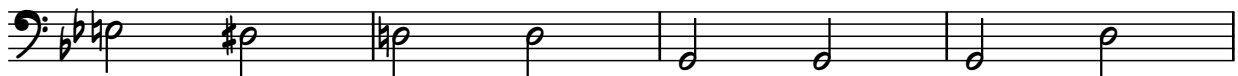
Gm

Gm(#5)

Gm⁶

Gm⁷

57



A7

Am7(b5)

D(SUS4)

D7

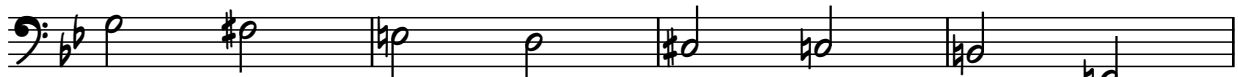
Gm

Gm

D7

(H)

61



G

Gmaj7

G⁶

G

C#m7

C7(b5)

Bm7

E7

CONTRA BASS

65

Am E7 A13 D7 D7(#5)

69

G Gmaj7 G6 G B+ Bm7 E7

A7 A7 Cm6 D7

77

Gm Gm(#5) Gm6 Gm(#5) Gm Gm7

81

A7 Am7(b5) D(SUS4) D7 Gm Gm D7

85

G G C#m7 C7(b5) Bm7 E7

89

Am E7 A13 D+

93

G / B+ E7

97

A7 / Cm6 D7

101

Gm Gm(#5) Gm6 Gm(#5) Gm Gm7

105

/ D7 Gm Eb7 C7 Eb7 Gm Gm